



GeoNetwork opensource 3.10.x

Setup Instructions for Windows



GeoNetwork opensource 3.10.x

Setup Instructions for Windows

Date

9/3/2020

Author(s)

GeoCat

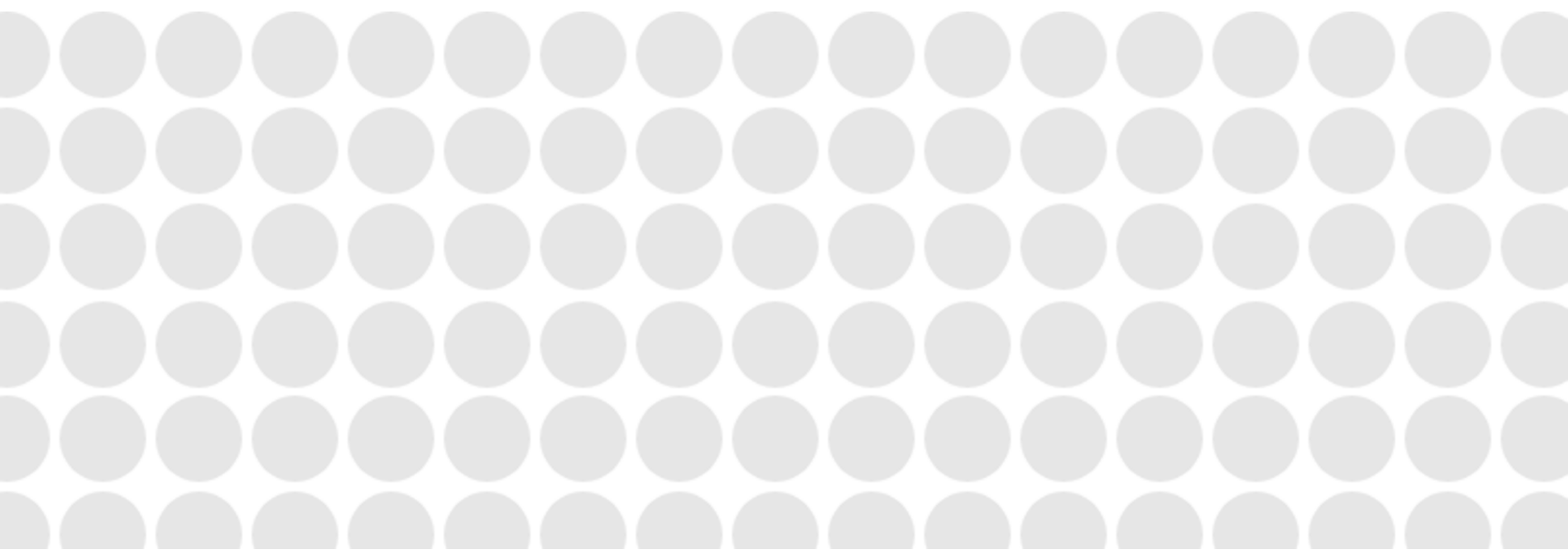




Table of Contents

1. Introduction	4
2. Installation Notes	4
2.1. Java Runtime Environment	5
2.2. Install location	5
2.3. Start Menu folder	6
2.4. Web Server port	7
2.5. Installation type	8
3. Removing GeoNetwork	10
3.1 Removing the database	10
4. Running GeoNetwork in 32-bit mode	10

1. Introduction

If you are a Windows user and you want to quickly install GeoNetwork on your machine, the easiest way to do so is by running the Windows Setup. The installation wizard will guide you through the setup process.

Please download an installer for the desired GeoNetwork version [here](#) and double-click the *GeoNetwork-install-<version>.exe* file to start the installation process.

The installer has been built using [NSIS](#) and was tested on Windows 10 only. However, because GeoNetwork is a cross-platform Java application and NSIS supports all Windows versions, the installer should work on Windows 7 or newer.

In case you do experience any difficulties with the Windows Setup, please [let us know](#).

Note

The Windows Setup is not part of the core GeoNetwork project and is brought to you by [GeoCat](#), one of the main contributors to GeoNetwork opensource. When you run the installer and Windows asks you if you wish to proceed, always ensure that it says:

Verified publisher: GeoCat BV

2. Installation Notes

The installer requires administrative privileges. This is especially necessary if you wish to install GeoNetwork as a Windows service (after which it can be used by most users).

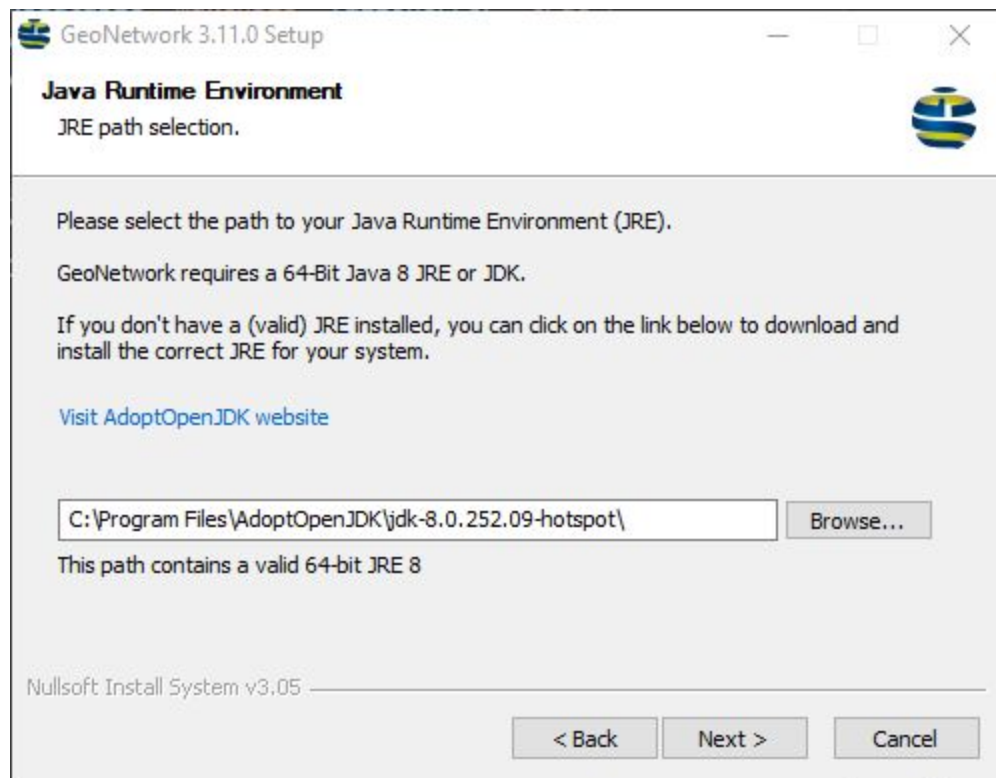
The installer will guide you through the following steps:

1. Introduction
2. License Agreement (GPL v2)
3. [Java Runtime Environment](#) selection
4. [Install location](#)
5. [Start Menu folder](#)
6. [Web Server port](#)
7. [Installation type](#) (manual vs. service)
8. Summary
9. Installation execution

Most steps are pretty self-explanatory, but others might require some background information.

2.1. Java Runtime Environment

After you have clicked through the first steps (introduction and license agreement), you will be asked to specify the desired Java Runtime Environment (JRE). GeoNetwork currently requires a [64-bit](#) Java 8 (1.8) Runtime Environment.



The installer will always try and find a suitable JRE (e.g. [AdoptOpenJDK](#)). You may have multiple JREs on your system, so when the installer has detected a less-preferable one first, you can point it to the preferred JRE location. If the installer cannot find a JRE 8, the setup process will abort.

2.2. Install location

The Windows installer will set up GeoNetwork as a [64-bit](#) application. This means that GeoNetwork will be installed in the Windows 64-bit Program Files directory by default. On most systems, this will be *C:\Program Files\GeoNetwork*.

However, if required, you can change this directory to some other location, provided that you have write access to that directory.

Note

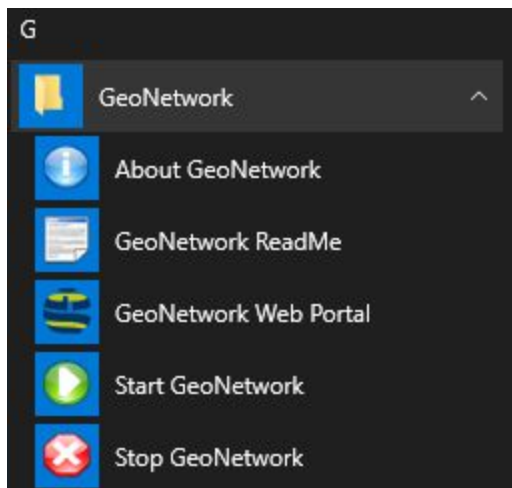
In the past, there have been problems running GeoNetwork from a directory path that contains spaces. This issue should have been resolved.

However, if you do experience any problems, please [report them](#).
As a workaround, you could uninstall GeoNetwork again and re-install it in a different directory that does not contain spaces in its path.

2.3. Start Menu folder

The installer will create a few shortcuts in the GeoNetwork Start Menu folder. If needed, you can rename this folder in this installation step.

The following shortcuts will be created:



- **About GeoNetwork:** Opens the official home page in the browser.
- **GeoNetwork ReadMe:** Opens the local ReadMe page in the browser.
- **GeoNetwork Web Portal:** Opens the web application main page in the browser.
- **Start GeoNetwork:** Starts the application.
- **Stop GeoNetwork:** Stops the application.



2.4. Web Server port

The Windows installer will set up GeoNetwork for a Java-based web server called [Jetty](#). In this installation step, you can choose the port on which the GeoNetwork website will run. By default, this is port 8080.

If needed (e.g. because of IT regulations or a conflicting port), you can change this to something else, as long as it's within the range 1024-65535 or port 80 (but this one might be taken already).

Note

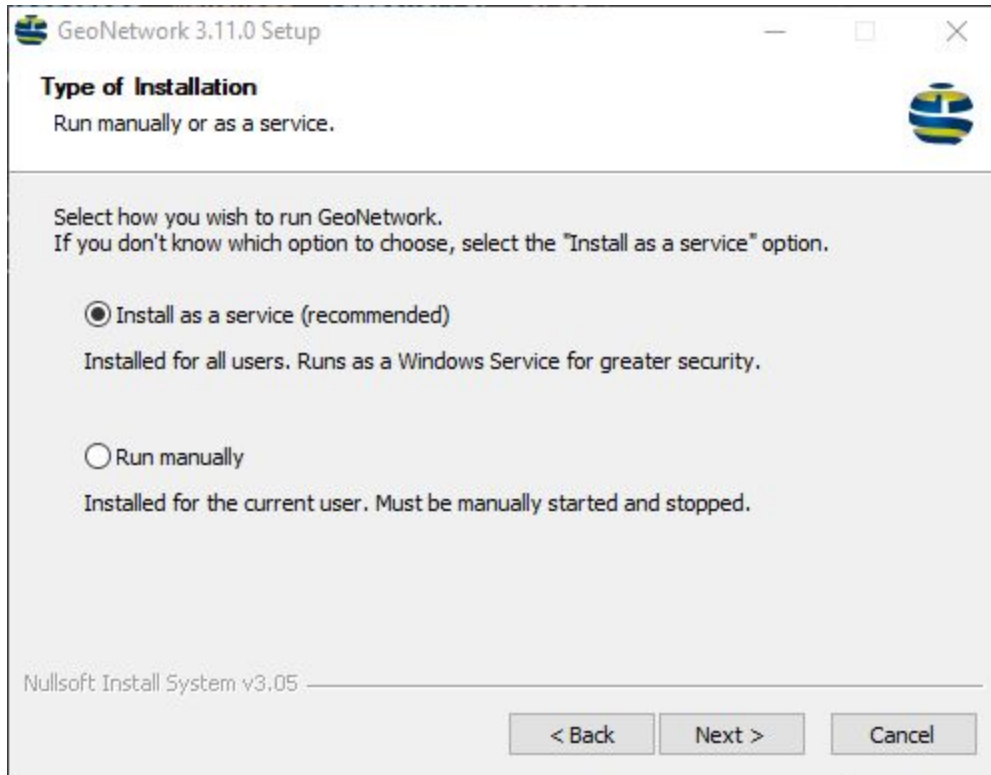
The installer will not detect if the port is already taken. When in doubt, you could open a Windows command prompt and type:

```
netstat -ano
```

to get an overview of all ports that are in use.

If the installer fails to complete successfully, or if GeoNetwork fails to run when you open its Web UI at `http://localhost:<port>/geonetwork` because of a port conflict, please uninstall and re-install GeoNetwork.

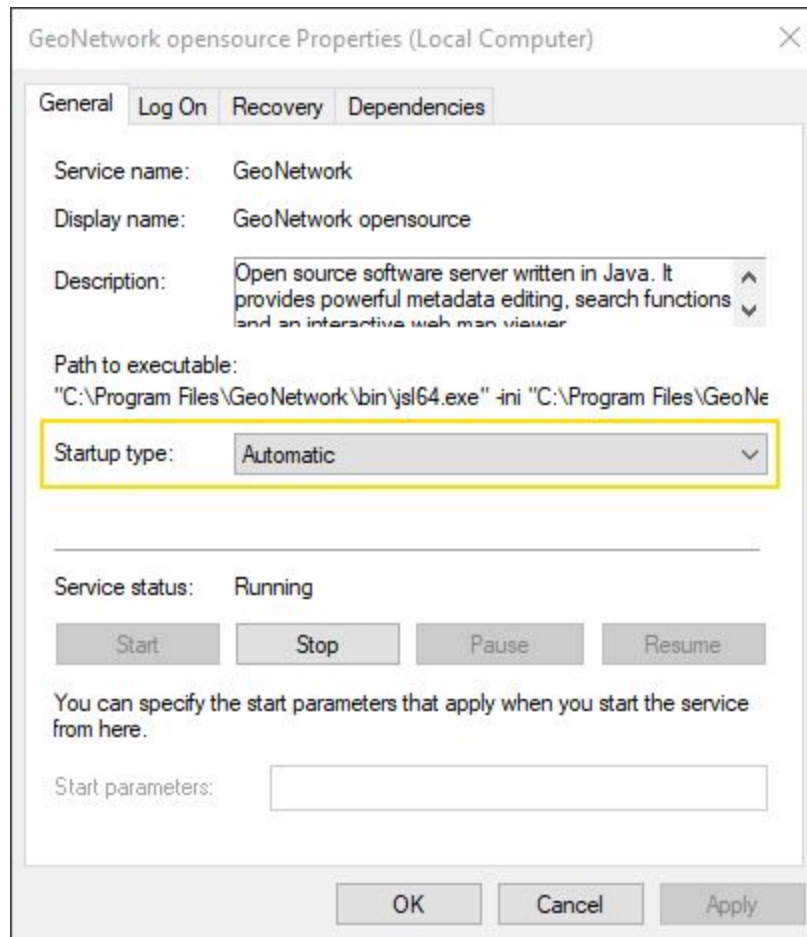
2.5. Installation type



GeoNetwork can be run either as a Windows service (default) or manually.

If you wish to run GeoNetwork automatically every time the system starts up, installing it as a Windows service is the way to go.

Note that you can also set the service to start and stop manually, if needed. To achieve this, open the Windows Services dialog (e.g. by typing *Services* in the Search box on your Windows taskbar) once the installation has completed and double-click the *GeoNetwork opensource* service. This will open the following dialog, where you can set the *Startup type*:



Note that the actual GeoNetwork process name here is *jsl64.exe*. This is the [Java Service Launcher](#) that acts as a wrapper so that Windows can start the Java application as a service.

Although running GeoNetwork as a service is recommended, because it makes the application available to all users on the system in a more secure manner, you can also choose to start and stop it manually.

Whatever installation type you choose, there should always be 2 shortcuts in the [GeoNetwork Start Menu folder](#) that allow you to start and stop the service or application at any given time.

3. Removing GeoNetwork

GeoNetwork ships with an uninstaller that allows you to completely remove the application from your system. The uninstaller resides in the GeoNetwork application folder and can be run from there, but the easiest and safest way to run it, is from the *Add or remove programs* or *Apps & Features* dialog in Windows.

Find the GeoNetwork entry and click on the *Uninstall* button to remove the application. The uninstaller will stop the application (if it's still running) and completely remove the software.

3.1 Removing the database

If your GeoNetwork uses a local H2 database (which is the default if you did not explicitly change this manually), the uninstaller will ask you if you wish to remove the database as well. If you plan to (re-)install GeoNetwork at a later stage, it is recommended to keep the database, so you can continue working where you left off once you have installed it again.

4. Running GeoNetwork in 32-bit mode

By default, GeoNetwork will be installed as a 64-bit application. If required, you can also run it under a 32-bit Java Runtime Environment. However, this cannot be achieved using the Windows installer, since it has been built for a 64-bit installation only. In that case, you will have to manually install GeoNetwork using one of the [official releases](#).



GEOCAT BV

Veenderweg 13
6721 WD Bennekom
The Netherlands

+31 (0) 318 416 664

info@geocat.net

www.geocat.net

VAT: NL820259561.B01

KvK: 08162601